

Christmas Carols

230102

piffero primo c0000

All Through the Night

welsh traditional

Musical score for 'All Through the Night' in G major (one sharp) and 4/4 time. The score consists of three staves. The first staff is the melody, featuring a mix of quarter and eighth notes with some rests. The second and third staves provide harmonic accompaniment with chords and moving lines. The piece concludes with a double bar line.

piffero primo c0001

Angels We Have Heard on High

french traditional

Musical score for 'Angels We Have Heard on High' in G major (one sharp) and 4/4 time. The score consists of four staves. The first staff is the melody, characterized by dotted rhythms and eighth notes. The second and third staves provide harmonic accompaniment with chords and moving lines. The fourth staff continues the accompaniment. The piece concludes with a double bar line.

piffero primo c0003

As With Gladness Men of Old

conrad kocher

Musical score for 'As With Gladness Men of Old' in D major (two sharps) and 4/4 time. The score consists of two staves. The first staff is the melody, featuring a mix of quarter and eighth notes. The second staff provides harmonic accompaniment with chords and moving lines. The piece concludes with a double bar line.

Christmas Carols

230102

piffero primo c0004

Away In a Manger

german

Musical score for 'Away In a Manger' in 3/4 time, key of D major. The score consists of two staves. The first staff contains the melody, and the second staff contains a harmonic accompaniment. The piece concludes with a double bar line.

piffero primo c0007

Christmas Is Coming

english traditional

Musical score for 'Christmas Is Coming' in 4/4 time, key of D major. The score consists of two staves. The first staff contains the melody, and the second staff contains a harmonic accompaniment. The piece concludes with a double bar line.

piffero secondo c0008

Christmas Is Coming

english traditional

Musical score for 'Christmas Is Coming' in 4/4 time, key of D major. The score consists of two staves. The first staff contains the melody, starting with the instruction '8vo'. The second staff contains a harmonic accompaniment. The piece concludes with a double bar line.

piffero primo c0006

Christ Was Born on Christmas Day

german

Musical score for 'Christ Was Born on Christmas Day' in 6/8 time, key of D major. The score consists of two staves. The first staff contains the melody, and the second staff contains a harmonic accompaniment. The piece concludes with a double bar line.

Christmas Carols

230102

piffero primo c0009

Deck the Hall

welsh traditional

piffero secondo c0010

Deck the Hall

welsh traditional

piffero primo c0011

Ding Dong Merrily on High

french

Christmas Carols

230102

piffero secondo c0012

Ding Dong Merrily on High

french

Musical score for 'Ding Dong Merrily on High' in G major (one sharp) and 4/4 time. The score consists of three staves. The first staff begins with a treble clef, a key signature of one sharp (F#), and a 4/4 time signature. The melody is written in a simple, folk-like style with eighth and quarter notes. A double bar line appears after the first four measures. The second staff continues the melody, and the third staff concludes it with a double bar line.

piffero primo c0014

The First Noel

Musical score for 'The First Noel' in G major (one sharp) and 3/4 time. The score consists of three staves. The first staff begins with a treble clef, a key signature of one sharp (F#), and a 3/4 time signature. The melody is written in a simple, folk-like style with eighth and quarter notes. A double bar line appears after the first four measures. The second staff continues the melody, and the third staff concludes it with a double bar line.

piffero secondo c0015

The First Noel

unk

Musical score for 'The First Noel' in G major (one sharp) and 3/4 time. The score consists of four staves. The first staff begins with a treble clef, a key signature of one sharp (F#), and a 3/4 time signature. The melody is written in a simple, folk-like style with eighth and quarter notes. A double bar line appears after the first four measures. The second staff continues the melody, and the third staff concludes it with a double bar line. The fourth staff is a separate line of music, possibly a variation or a different part of the piece, also in G major and 3/4 time, ending with a double bar line.

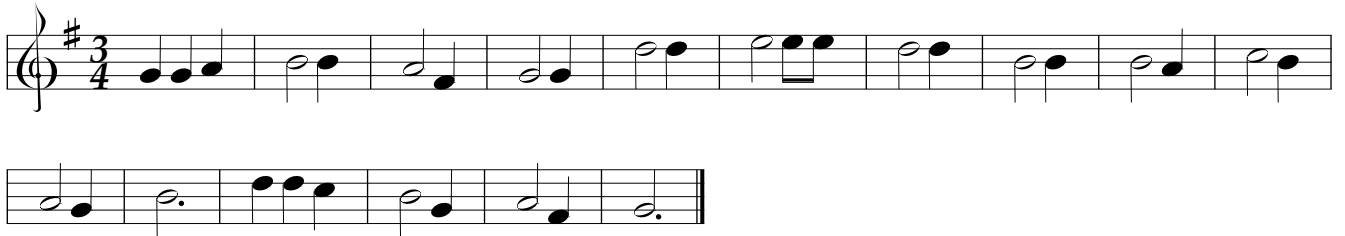
Christmas Carols

230102

piffero primo c0016

The Friendly Beasts

english 12th century



piffero secondo c0017

The Friendly Beasts

english 12th century



piffero primo c0043

God Rest Ye Merry, Gentlemen

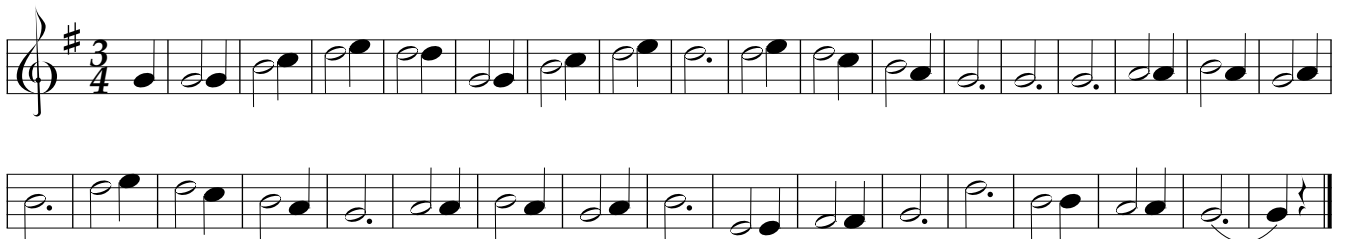
english



piffero primo c0044

Good Christian Men, Rejoice

german 14th cent



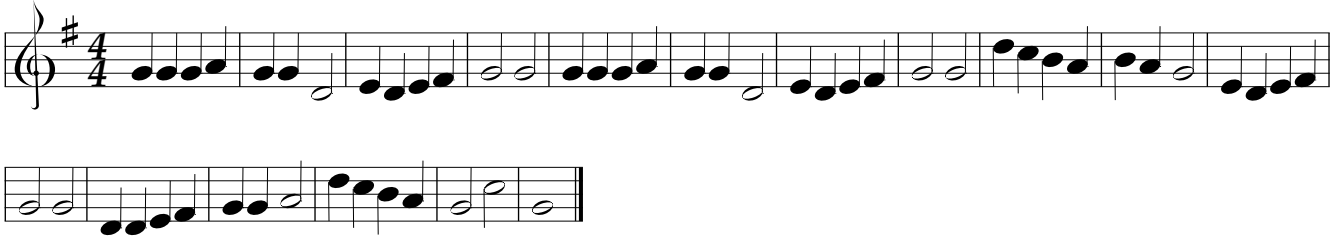
Christmas Carols

230102

piffero primo c0046

Good King Wenceslas

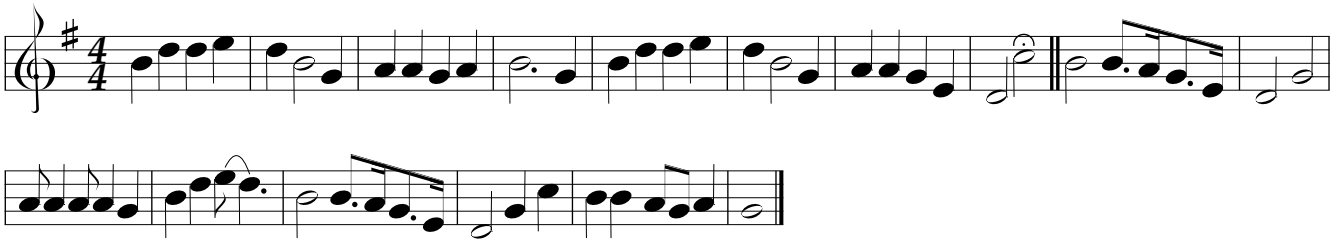
latin carol, 16th cent



piffero primo c0045

Go, Tell It On The Mountain

spiritual



piffero primo c0047

Hark! The Herald Angels Sing

felix mendelssohn



piffero primo c0048

Here We Come A-Caroling

english wassail song



Christmas Carols

230102

piffero primo c0058

I Heard The Bells On Christmas Day

j baptiste calkin

Musical notation for the first two staves of 'I Heard The Bells On Christmas Day'. The key signature is one sharp (F#) and the time signature is 4/4. The melody is written in a single treble clef staff.

piffero primo c0049

It Came Upon a Midnight Clear

richard s. willis

Musical notation for the first two staves of 'It Came Upon a Midnight Clear'. The key signature is one sharp (F#) and the time signature is 6/8. The melody is written in a single treble clef staff.

piffero primo c0050

Jingle Bells

james pierpont

Musical notation for the first three staves of 'Jingle Bells'. The key signature is one sharp (F#) and the time signature is 4/4. The melody is written in a single treble clef staff.

piffero primo c0051

Joy To The World

geo f handel

Musical notation for the first two staves of 'Joy To The World'. The key signature is one sharp (F#) and the time signature is 2/4. The melody is written in a single treble clef staff.

Christmas Carols

230102

piffero primo c0013

O Come, All Ye Faithful

traditional

Musical score for 'O Come, All Ye Faithful' in G major and 4/4 time. The score consists of three staves of music. The first staff begins with a treble clef, a key signature of one sharp (F#), and a 4/4 time signature. The melody is written in a simple, folk-like style with quarter and eighth notes. The second and third staves continue the melody, with a double bar line appearing at the end of the second staff.

piffero primo c0052

O Come, O Come, Emmanuel

french

Musical score for 'O Come, O Come, Emmanuel' in G major and 4/4 time. The score consists of two staves of music. The first staff begins with a treble clef, a key signature of one sharp (F#), and a 4/4 time signature. The melody is characterized by a more rhythmic and melodic style, featuring many eighth and sixteenth notes. The second staff continues the melody and ends with a double bar line.

piffero primo c0053

O Holy Night

adolphe adam

Musical score for 'O Holy Night' in G major and 6/8 time. The score consists of four staves of music. The first staff begins with a treble clef, a key signature of one sharp (F#), and a 6/8 time signature. The melody is written in a style typical of Adolphe Adam, with a mix of eighth and sixteenth notes and some grace notes. The second, third, and fourth staves continue the melody, with various phrasing and articulation marks throughout.

Christmas Carols

230102

piffero primo c0054

O Little Town of Bethlehem

lewis h redner

Musical notation for 'O Little Town of Bethlehem' in G major, 4/4 time. The score consists of two staves. The first staff begins with a treble clef, a key signature of one sharp (F#), and a 4/4 time signature. The melody is written in a simple, folk-like style with eighth and quarter notes. The second staff continues the melody, ending with a double bar line.

piffero primo c0002

Pat-A-Pan

french

Musical notation for 'Pat-A-Pan' in G major, 4/4 time. The score consists of two staves. The first staff begins with a treble clef, a key signature of one sharp (F#), and a 4/4 time signature. The melody is characterized by a rhythmic pattern of eighth notes and rests, typical of a piffero. The second staff continues the melody, ending with a double bar line.

piffero primo c0055

Silent Night

franz gruber

Musical notation for 'Silent Night' in G major, 3/4 time. The score consists of two staves. The first staff begins with a treble clef, a key signature of one sharp (F#), and a 3/4 time signature. The melody is written in a simple, folk-like style with quarter and eighth notes. The second staff continues the melody, ending with a double bar line.

piffero primo c0005

Un Flambeau, Jeanette Isabelle

french

Musical notation for 'Un Flambeau, Jeanette Isabelle' in G major, 3/8 time. The score consists of three staves. The first staff begins with a treble clef, a key signature of one sharp (F#), and a 3/8 time signature. The melody is written in a simple, folk-like style with eighth and quarter notes. The second and third staves continue the melody, ending with a double bar line.

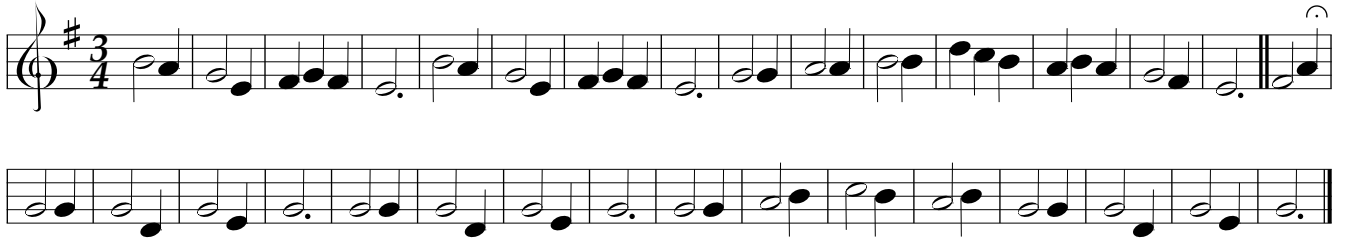
Christmas Carols

230102

piffero primo c0056

We Three Kings

john h hopkins jr



piffero primo c0057

We Wish You a Merry Christmas

english

